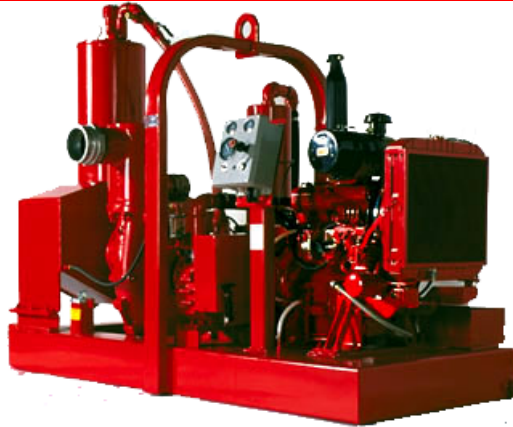


## 6" Variable-Use Non-Clog Pump Model 6NHRD



### MODEL FEATURES

- Fully automatic, dry priming and dry running, self-contained, portable pump, non-clog pump unit
- Handles large volumes of air, water, and trash
- Operates efficiently under intermittent flow conditions
- Automatically primes and re-primers at suction lifts of 25 feet or greater

### PUMP

MODEL: Paco  
 SIZE: 6" x 8" x 8"  
 CASING: Class 30 cast iron  
 IMPELLER: 2-port enclosed, non-clog, ASTM A48 class 30 cast iron  
 SEAL: Type ARC conical seal for dry running and abrasive resistance or double mechanical seal  
 SUCTION WEAR PLATE: Cast iron  
 SHAFT: AISI 1040 or equivalent  
 SOLIDS HANDLING: 3"

### ENGINE

MAKE: Kubota  
 MODEL: V2003-TE  
 TYPE: 4-cylinder, 4-cycle liquid-cooled diesel  
 DISPLACEMENT: 121.98 cu in.  
 GOVERNOR: Mechanical  
 LUBRICATION: Constant

pressure, full flow  
 AIR CLEANER: Dry type reusable  
 ELECTRICAL SYSTEM: 12V DC  
 SAFETY SHUTDOWNS: High head temperature, low oil pressure  
 MANUFACTURER'S PERFORMANCE:  
 Rated Power—hp (kW)  
     intermittent: 42 (30.9)  
     continuous: 32.5 (23.9)  
 Rated speed—rpm: 1800

### VACUUM PUMP

MODEL: Wallenstein  
 TYPE: Rotary vane, air cooled, oil lubricated  
 CAPACITY: 128 cubic inch SCFM @ 850 rpm nominal  
 CASING: Class 30 cast iron  
 ROTOR: Class 30 cast iron with self-adjusting, Ferobestos® vanes

### VACUUM PUMP OIL RECLAIMING SYSTEM

CONSTRUCTION: carbon steel  
 OIL FILL LEVEL: 10 gallons  
 VOLUME: 5005 cu in.  
 OIL COOLER: integral to air separation chamber

### AIR SEPARATOR

CONSTRUCTION: Carbon steel  
 FLOAT ASSEMBLY: Direct-acting stainless steel float with stainless steel support and corrosion-resistant components

FLOAT SIZE: 636 cu in.  
 AIR DOME: Bronze with nylon valve seats and rubber-covered backflow preventer check ball  
 VALVES: Nylon, replaceable  
 WET CHAMBER: 7730 cu in.  
 AIR CHAMBER: 3721 cu in.  
 VACUUM RELIEF VALVE: 50 CFM

### STANDARD FITTINGS

DISCHARGE VALVE: Cast iron with 6" Victaulic® nipple and rear clean-out, flapper-type with replaceable weights  
 INLET: 6" Victaulic® nipple

### STANDARD EQUIPMENT

- Integral fuel tank (8" x 8" rectangular tubing) with 24 hour run time fuel capacity
- Center point lifting bail
- Battery box
- Vacuum gauge with liquid filled, stainless steel case

### AVAILABLE OPTIONS

- Optional I-beam frame
- Optional DOT trailer

### PHYSICAL DIMENSIONS

WEIGHT: 2560 lbs.  
 LENGTH: 90"  
 WIDTH: 44"  
 HEIGHT: 64"

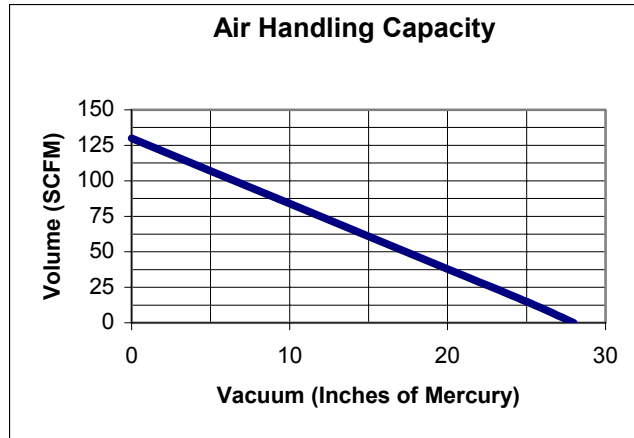
In the interest of product improvement, specifications may change without notice.

# GRIFFIN PUMP & EQUIPMENT

## 6" VARIABLE-USE PUMP

### Model: 6NHRD

- Vacuum assisted, self-priming
- End suction
- Non-clog
- Centrifugal pump



Driver RPM: 1800  
Driven RPM: 850

Horsepower: 5  
Type: Rotary Vane

