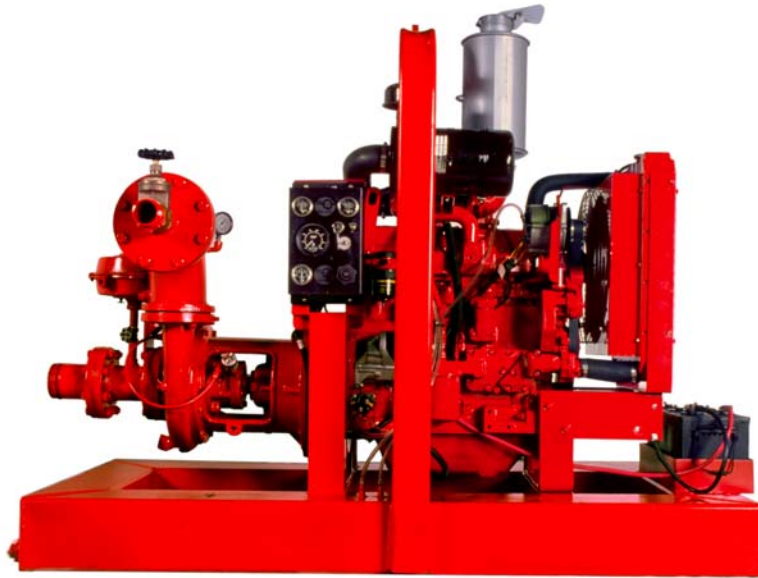


GRIFFIN

4" High Pressure Jet Pump Model 4EHHD



MODEL FEATURES

- Self-contained, portable pump, jet pump unit
- Capable of producing high pressure flow for jetting standard wellpoints, well casings, or pilings
- Operates efficiently under intermittent flow conditions

PUMP

MODEL: Paco
SIZE: 3" x 4" x 12"
CASING: Class 30 cast iron
IMPELLER: Enclosed with back vanes, ASTM A48 class 30 cast iron or bronze
SEAL: Type ARC conical seal for dry running and abrasive resistance
SUCTION WEAR PLATE: Cast iron
SHAFT: AISI 1040 or equivalent
SHAFT SLEEVE: Bronze
FLYWHEEL HOUSING: SAE 3/4
FLYWHEEL COUPLING: 11-1/2"

ENGINE

MAKE: John Deere
MODEL: 4045DF150 (80)
TYPE: 4-cylinder, 4-cycle water cooled, naturally aspirated diesel
DISPLACEMENT: 276 cu in.
GOVERNOR: Mechanical
LUBRICATION: Constant pressure, full flow
AIR CLEANER: Replaceable dry element
ELECTRICAL SYSTEM: 12V DC
SAFETY SHUTDOWNS: High head temperature, low oil pressure
MANUFACTURER'S PERFORMANCE:
Rated Power—hp (kW)
intermittent: 80 (60)
continuous: 72 (54)
Rated speed—rpm: 2500

PRIMING SYSTEM

TYPE: Hand-operated diaphragm primer

STANDARD FITTINGS

DISCHARGE VALVE: Flapper-type gasket with replaceable weights

INLET: 4" threaded nipple
DISCHARGE: 2-1/2" male cam-lock

STANDARD EQUIPMENT

- Integral fuel tank (8" x 8" rectangular tubing) with 24 hour run time fuel capacity
- Center point lifting bail
- Battery box
- Pressure gauge with liquid filled, stainless steel case

AVAILABLE OPTIONS

- Optional DOT trailer
- Optional fitting sizes or configurations per customer specification
- Other engines & pumps may be available upon customer request

PHYSICAL DIMENSIONS

WEIGHT: 2450 lbs.
LENGTH: 91"
WIDTH: 42"
HEIGHT: 79"

In the interest of product improvement, specifications may change without notice.

GRIFFIN
PUMP & EQUIPMENT, INC.

5731 Harvey Wilson Drive, Houston, Texas 77020
(713) 671-8157 fax: (713) 675-1304
<http://www.griffinpump.com>
e-mail: gpe@griffinpump.com

4" HIGH PRESSURE JET PUMP (END SUCTION CENTRIFUGAL) MODEL: 4EHHD

