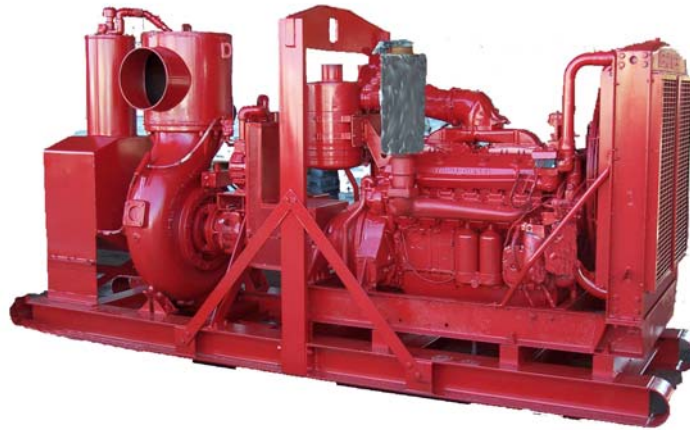


GRIFFIN

16" Variable-Use Non-Clog Pump Model 16NCRD



MODEL FEATURES

- Fully automatic, dry priming and dry running, self-contained, portable pump, non-clog pump unit
- Handles large volumes of air, water, and trash
- Operates efficiently under intermittent flow conditions
- Automatically primes and re-primers at suction lifts of 25 feet or greater

PUMP

SIZE: 12" x 16" X 17.5"
CASING: Class 30 cast iron
IMPELLER: 2-port enclosed, non-clog, ASTM A48 class 30 cast iron
SEAL: Tungsten-Carbide Cycloseal for dry running and abrasive resistance
SUCTION WEAR PLATE: Cast iron
SHAFT: 17-4 ph shafting
SOLIDS HANDLING: 4.5"

ENGINE

MAKE: Detroit
MODEL: 12V71
TYPE: 12-cylinder, 2-cycle water cooled, naturally aspirated diesel
DISPLACEMENT: 852 cu in.
GOVERNOR: Mechanical
LUBRICATION: Constant

pressure, full flow
AIR CLEANER: Oil-bath
ELECTRICAL SYSTEM: 24V DC
SAFETY SHUTDOWNS: High head temperature, low oil pressure
MANUFACTURER'S PERFORMANCE:
Rated Power—hp (kW)
intermittent: 371 (277)
Rated speed—rpm: 1800

VACUUM PUMP

MODEL: Wallenstein
TYPE: Rotary vane, air cooled, oil lubricated
CAPACITY: 94 cubic inch SCFM @ 850 rpm nominal
CASING: Class 30 cast iron
ROTOR: Class 30 cast iron with self-adjusting, Ferobestos® vanes

VACUUM PUMP OIL RECLAIMING SYSTEM

CONSTRUCTION: carbon steel
OIL FILL LEVEL: 10 gallons
VOLUME: 3000 cu in.
OIL COOLER: integral to air separation chamber

AIR SEPARATOR

CONSTRUCTION: Carbon steel
FLOAT ASSEMBLY: Direct-acting stainless steel float with stainless steel support and corrosion-

resistant components
FLOAT SIZE: 636 cu in.

AIR DOME: Bronze with nylon valve seats and polypropylene backflow preventer check ball
VALVES: Nylon, replaceable
WET CHAMBER: 19,492 cu in.
AIR CHAMBER: 3493 cu in.
VACUUM RELIEF VALVE: 50 CFM

STANDARD FITTINGS

DISCHARGE VALVE: Fabricated steel with spring-actuated valve plate and 16" Victaulic® discharge nipple
INLET: 20" Victaulic® nipple

STANDARD EQUIPMENT

- I-beam frame
- Center point lifting bail
- Battery box
- Vacuum gauge with liquid filled, stainless steel case
- Drive shaft PTO

PHYSICAL DIMENSIONS

WEIGHT: 11,500 lbs.
LENGTH: 170"
WIDTH: 50"
HEIGHT: 92"

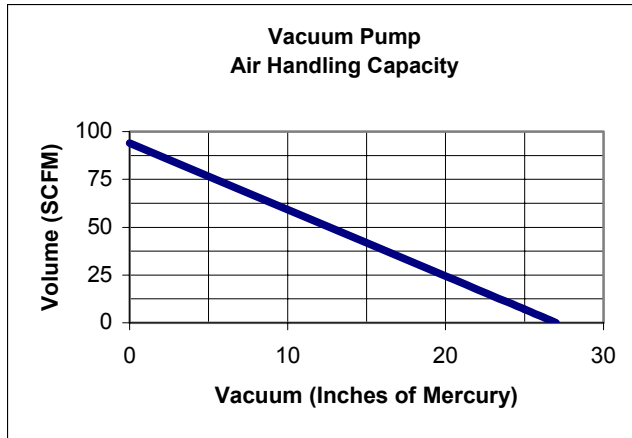
In the interest of product improvement, specifications may change without notice.

GRIFFIN
PUMP & EQUIPMENT, INC.

5731 Harvey Wilson Drive, Houston, Texas 77020
(713) 671-8157 fax: (713) 675-1304
<http://www.griffinpump.com>
e-mail: gpe@griffinpump.com

GRIFFIN PUMP & EQUIPMENT
16" VARIABLE-USE PUMP
Model: 16NCRD

- Vacuum assisted, self-priming
- End suction
- Non-clog
- Centrifugal pump



Driver RPM: 1800
 Driven RPM: 850

Horsepower: 5
 Type: Rotary Vane

