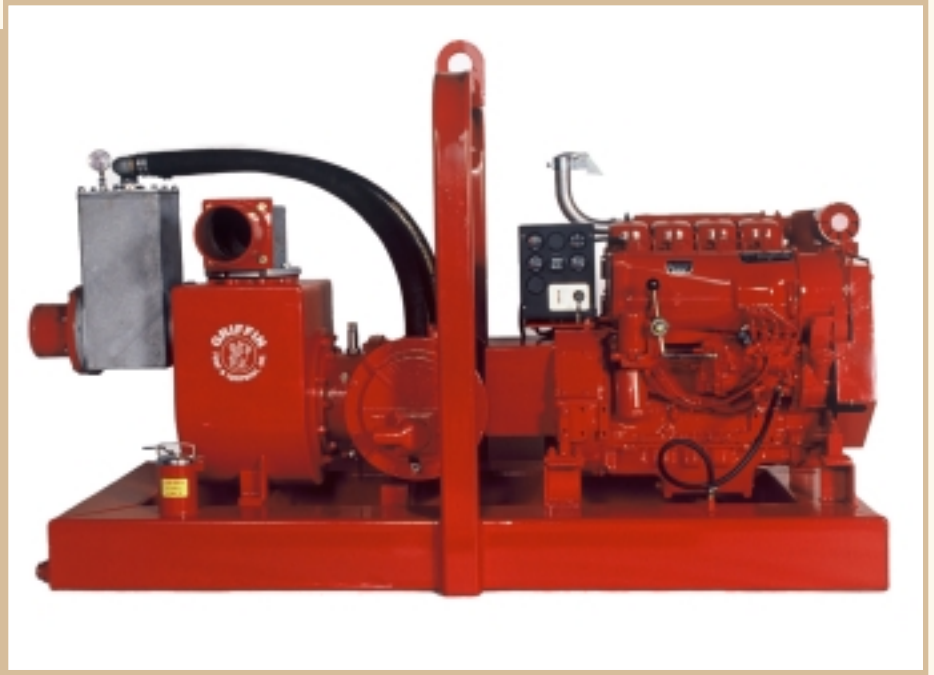


# Griffin Variable-Use Trash Pumps

## Features:

- Air handling capacities to 70 cfm
- Mechanical seal configurations
- Diaphragm vacuum pumps
- Self-priming design
- Impeller handles solids to 3"
- Integral fuel tank designed for 24 hour operation
- Large clean outs
- Trailer mounted and Silent Pac versions available
- Use on a variety of applications-bypass, wellpoint and sumping



**Griffin's Variable-Use, Trash Pumps** are available in 4" to 12" models. These pumps are fully automatic dry-priming and dry-running portable pumps. They operate efficiently under intermittent flow conditions.

These pumps are capable of handling flow up to 5,500 gpm and head conditions up to 200 ft. The pumps are equipped with double diaphragm pumps. The pump automatically primes and reprimed at suction lifts of 25 ft and greater. The trash pump is a self-priming design to improve priming efficiency. The impellers can handle solids up to 3" and larger.

These pumps are available in diesel or electric models with an integral fuel tank or trailer mounted. Other options are available with these units. Contact Griffin for more information.

**GRIFFIN**  
PUMP & EQUIPMENT, INC.

*Over 70 Years of Excellence*

Griffin Pump & Equipment, Inc.

5731 Harvey Wilson Drive • Houston, TX 77020

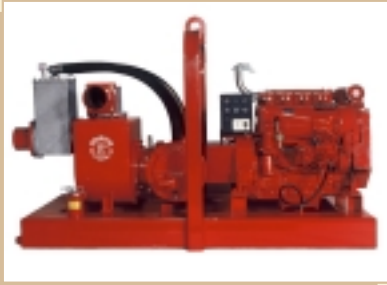
Tel: (713) 671-8157 or (866) 770-8100

Fax: (713) 675-1304

Email: [gpe@griffinpump.com](mailto:gpe@griffinpump.com)

[www.griffinpump.com](http://www.griffinpump.com)

# Griffin Variable-Use Trash Pumps



**Fully automatic dry-priming and dry-running portable pumps.**

## Standard Units:

Description	Size	Model	Solid Handling (Inches)	Maximum Capacity (GPM)	Maximum Head (Feet)
Trash Pumps	4"	4TRDD*	1.8	760	87
Trash Pumps	6"	6TRDD*	3	1320	72
Trash Pumps	6"	6THDD*	1.5	1680	104
Trash Pumps	8"	8TRDD*	2.7	2420	108

*Other sizes and models may be available. Contact Griffin for more information and options available.*

*\* Also available in Silent Pac.*

## Sales ▪ Rental ▪ Service

**GRIFFIN**  
PUMP & EQUIPMENT, INC.

*Over 70 Years of Excellence*

**Griffin Pump & Equipment, Inc.**

5731 Harvey Wilson Drive • Houston, TX 77020

Tel: (713) 671-8157 or (866) 770-8100

Fax: (713) 675-1304

Email: [gpe@griffinpump.com](mailto:gpe@griffinpump.com)

[www.griffinpump.com](http://www.griffinpump.com)