

# Griffin Variable-Use, Vacuum-Assisted, Non-Clog Pumps

## Features:

- Air handling capabilities to over 200 cfm
- Patented conical seal or mechanical seal configurations
- Over-sized air separation chamber with stainless steel float strips high volumes of light gases and air for fast priming
- Non-clog impeller handles stringy materials and solids up to 3" and larger
- Rotary vane vacuum pumps, compressors or diaphragm pump priming systems
- Integral fuel tank designed for 24 hour operation
- Large clean outs on suction and discharge
- Trailer mounted versions available
- Use on a variety of applications-  
sewage bypass, wellpoint and sumping



**8NCRD 8" non-clog pump used on a bypass site in Freeport, IL.**

**GRIFFIN**  
PUMP & EQUIPMENT, INC.

*Over 70 Years of Excellence*

Griffin Pump & Equipment, Inc.

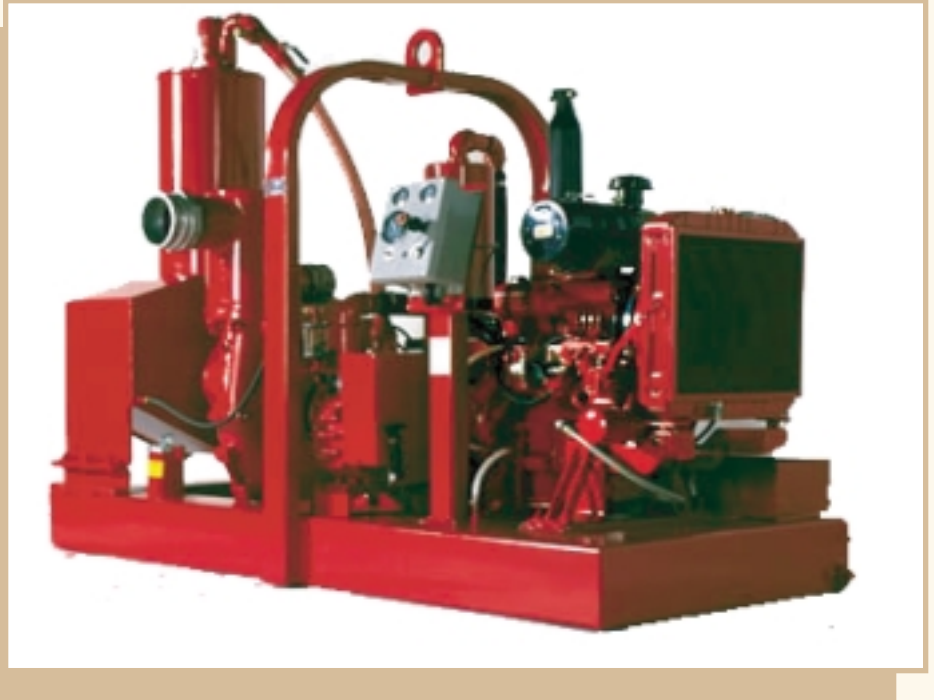
5731 Harvey Wilson Drive • Houston, TX 77020

Tel: (713) 671-8157 or (866) 770-8100

Fax: (713) 675-1304

Email: [gpe@griffinpump.com](mailto:gpe@griffinpump.com)

[www.griffinpump.com](http://www.griffinpump.com)



**Griffin's Variable-Use, Vacuum-Assisted, Non-Clog Pumps** are available in 4" to 16" models. These pumps are fully automatic, dry-priming and dry-running, non-clog portable pumps. They operate efficiently under intermittent flow conditions.

These pumps are capable of handling flow up to 12,000 gpm and head conditions up to 200 ft. The pumps are available with the Wind Tunnel® high volume air handling system, compressor primed or diaphragm vacuum pumps. The pumps air handling capacity ranges from 50 to over 200 cfm. The pump automatically primes and reprimed at suction lifts of 25 ft. and greater. The non-clog impellers can handle spherical solids up to 3" and larger.

These pumps are available in diesel or electric models with an integral fuel tank or trailer mounted. Other options are available with these units. Contact Griffin for more information and options available.

# Griffin Variable-Use, Vacuum-Assisted, Non-Clog Pumps



**16NCRD 16" Non-Clog Pump used for a project at the Olmstead Lock & Dam in Olmstead Illinois**



**6NHRD 6" Non-Clog Pump used for a bypass operation in Janesville, Wisconsin**



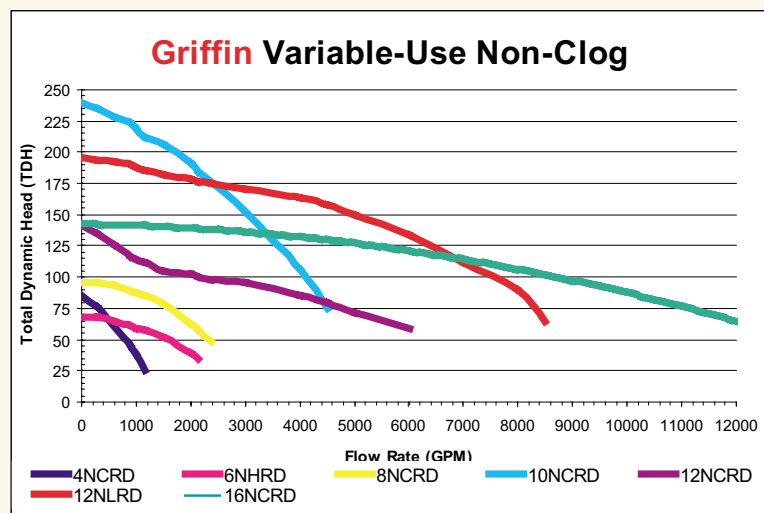
**8NCRD 8" Non-Clog Pump used for a dewatering operation at Lake Kingwood in Kingwood, Texas.**

## Standard Units:

Description	Size	Model	Solid Handling (Inches)	Maximum Capacity (GPM)	Maximum Head (Feet)
Variable-Use Vacuum-Assisted Non-Clog	4"	4NLRD	3	760	45
Variable- Use Vacuum-Assisted, Non-Clog	6"	6NCRD*	3	1150	60
Variable- Use Vacuum-Assisted, Non Clog	6"	6NHRD*	3	2100	68
Variable- Use Vacuum-Assisted, Non-Clog	8"	8NCRD*	3	2400	96
Variable-Use, Vacuum-Assisted, Non-Clog	10"	10NCRD	3.38	4500	240
Variable-Use, Vacuum-Assisted, Non-Clog	12"	12NLRD	4.25	8500	198
Variable-Use, Vacuum-Assisted, Non-Clog	12"	12NCRD	4.25	5900	142
Variable-Use, Vacuum-Assisted, Non-Clog	16"	16NCRD	4.5	12000	142

Other sizes and models may be available. Contact Griffin for more information and options available

\* Models available in the standard Griffin Silent Pac configuration.



Sales ▪ Rental ▪ Service

**GRIFFIN**

**PUMP & EQUIPMENT, INC.**

**Griffin Pump & Equipment, Inc.**  
 5731 Harvey Wilson Drive • Houston, TX 77020  
 Tel: (713) 671-8157 or (866) 770-8100  
 Fax: (713) 675-1304  
 Email: gpe@griffinpump.com  
 www.griffinpump.com

Wind Tunnel is a registered trademark of Griffin Dewatering Corporation